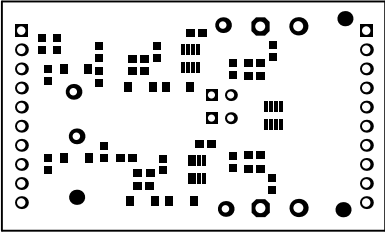
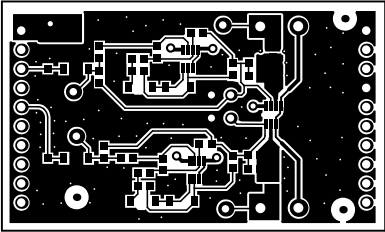


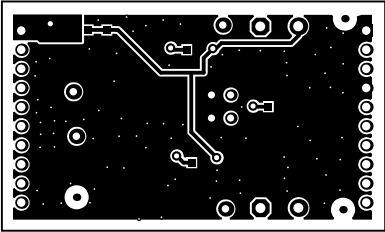
ALL ARTWORK VIEWED FROM TOP SIDE	BOARD #: SAT0020	REV: E2	SUN REV: Not In VersionControl
LAYER NAME = Top Overlay			
PLOT NAME = Top Overlay	GENERATED : 3/14/2014 5:02:07 PM	TEXAS INSTRUMENTS	



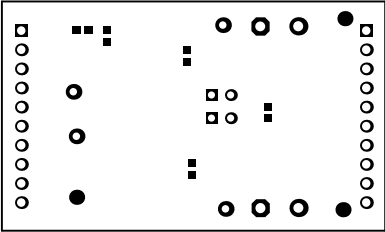
ALL ARTWORK VIEWED FROM TOP SIDE	BOARD #: SAT0020	REV: E2	SVN REV: Not In VersionControl
LAYER NAME = Top Solder			
PLOT NAME = Top Solder Mask	GENERATED : 3/14/2014 5:02:09 PM	TEXAS INSTRUMENTS	



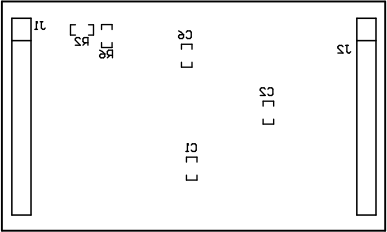
ALL ARTWORK VIEWED FROM TOP SIDE	BOARD #: SAT0020	REV: E2	SUN REV: Not In VersionControl
LAYER NAME = Top Layer			
PLOT NAME = Top Layer	GENERATED : 3/14/2014 5:02:11 PM	TEXAS INSTRUMENTS	



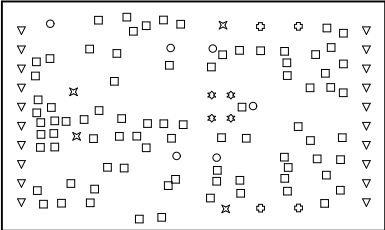
ALL ARTWORK VIEWED FROM TOP SIDE	BOARD #: SAT0020	REV: E2	SVN REV: Not In VersionControl
LAYER NAME = Bottom Layer			
PLOT NAME = Bottom Layer	GENERATED : 3/14/2014 5:02:14 PM	TEXAS INSTRUMENTS	



ALL ARTWORK VIEWED FROM TOP SIDE	BOARD #: SAT0020	REV: E2	SVN REV: Not In VersionControl
LAYER NAME = Bottom Solder			
PLOT NAME = Bottom Solder Mask	GENERATED : 3/14/2014 5:02:17 PM	TEXAS INSTRUMENTS	



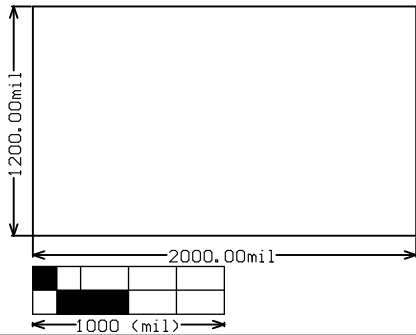
ALL ARTWORK VIEWED FROM TOP SIDE	BOARD #: SAT0020	REV: E2	SUN REV: Not In VersionControl
LAYER NAME = Bottom Overlay			
PLOT NAME = Bottom Overlay	GENERATED : 3/14/2014 5:02:20 PM	TEXAS INSTRUMENTS	



Symbol	Hit Count	Tool Size	Plated	Hole Type
□	82	10mil (0.254mm)	PTH	Round
○	6	28mil (0.711mm)	PTH	Round
✱	4	38mil (0.965mm)	PTH	Round
✕	4	40mil (1.016mm)	PTH	Round
▽	20	45.276mil (1.15mm)	PTH	Round
⊗	4	53mil (1.346mm)	PTH	Round
120 Total				

Drill Table

ALL ARTWORK VIEWED FROM TOP SIDE	BOARD #: SAT0020	REV: E2	SUN REV: Not In VersionControl
LAYER NAME = Drill Drawing			
PLOT NAME = Drill Drawing	GENERATED : 3/14/2014 5:02:22 PM	TEXAS INSTRUMENTS	



ALL ARTWORK VIEWED FROM TOP SIDE	BOARD #: SAT0020	REV: E2	SUN REV: Not In VersionControl
LAYER NAME = M2 Board Dimensions			
PLOT NAME = Board Dimensions	GENERATED : 3/14/2014 5:02:25 PM	TEXAS INSTRUMENTS	